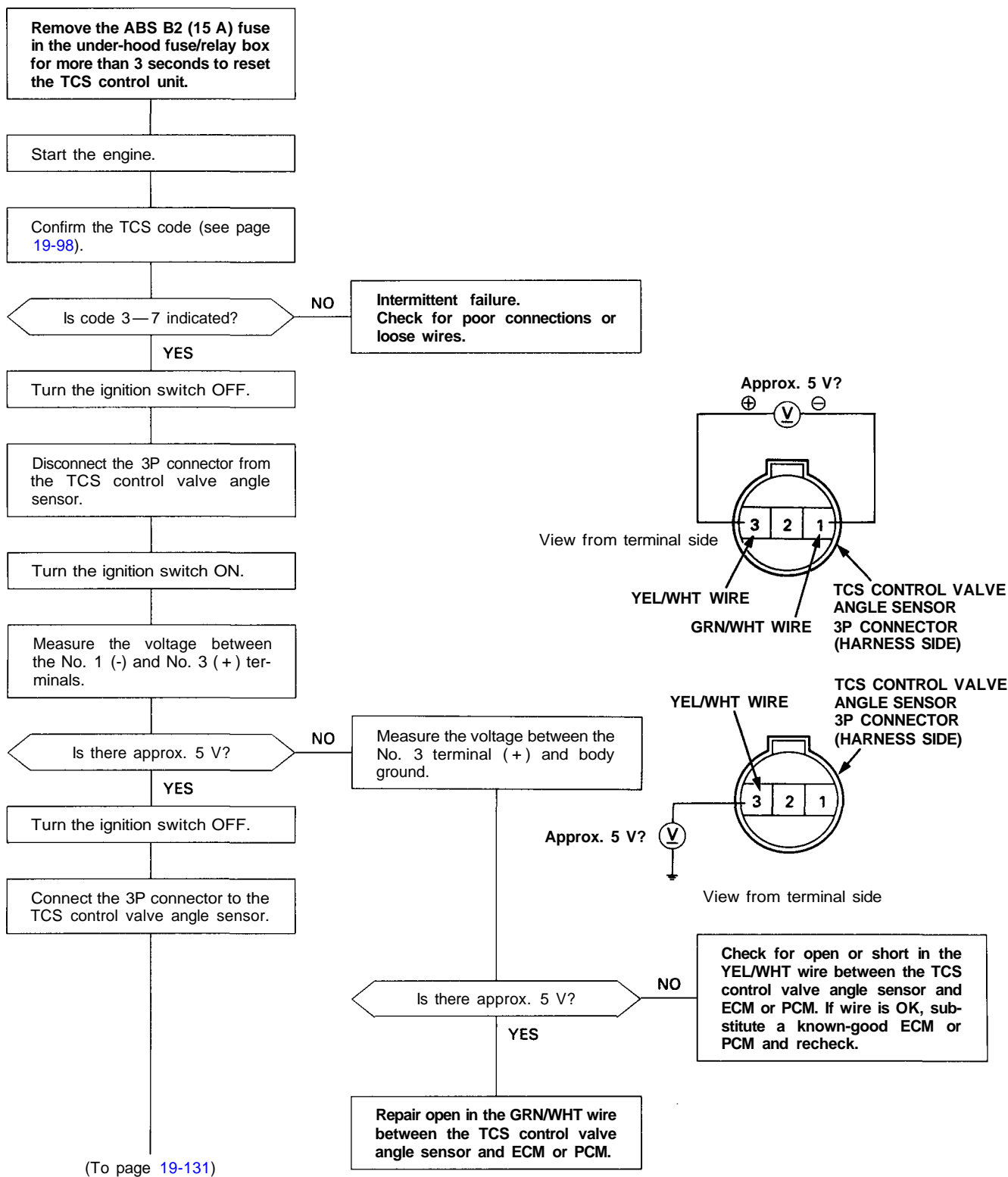


# Troubleshooting

## TCS Control Valve Angle ( $\theta$ TH) Sensor

Diagnostic Trouble Code (DTC) 3-7: TCS control valve angle ( $\theta$  TH) sensor





(From page 19-130)

Remove the intake air duct (see page 19-156).

Disconnect the 16P connector from the TCS control unit.

Turn the ignition switch ON.

Measure the voltage between the TCS control unit 16P connector terminal 1B ( + ) and body ground.

Is voltage approx. 4.5 V at fully open TCS control valve, and 0.5 V at fully closed TCS control valve.  
NOTE: There should be a smooth transition from approx. 4.5 V and 0.5 V as the TCS control valve is closed (see page 19-142).

YES

- Check for poor connections or loose wires.
- Substitute a known-good TCS control unit and recheck.

NO

Turn the ignition switch OFF.

Disconnect the 3P connector from the TCS control valve angle sensor.

Check for continuity between the 16P connector terminal 1B and body ground.

Is there continuity?

YES

Repair short in the BLU/GRN wire between the TCS control unit and TCS control valve angle sensor.

NO

Check for open in the BLU/GRN wire between the TCS control unit and TCS control valve angle sensor. If the wire is OK, replace the TCS control valve assembly (faulty TCS control valve angle sensor) and recheck.

